

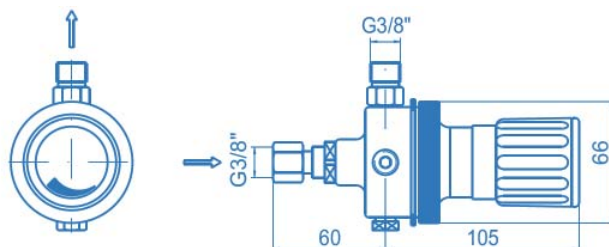
# Pilot pressure regulator ST2000

spectro**tec**

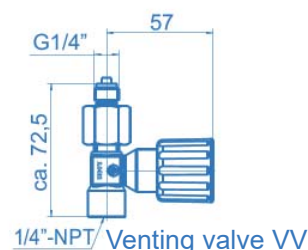
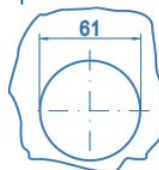


Pilot pressure regulator ST2000

## Dimensions and connections



Bore template for panel mounting



1/4"-NPT/Venting valve VV

### Product features

- Pilot pressure regulator for dome loaded pressure regulators controlled with process or separate gas
- For U12, U22, U42 and U43
- Single-stage with high control accuracy
- Operation reliability by central filter in pressure regulator
- Dust protected adjusting spindle
- Central filter in the pressure regulator
- Outlet pressure limitation by special adjustment
- For panel mounting
- Ergonomically designed
- Approved for use with oxygen

### Technische Daten

<b>Type</b>	einstufig
<b>Inlet pressure <math>P_1</math></b>	max. 40 bar
<b>Outlet pressure <math>P_2</math></b>	max. 0,5 ... 30 bar
<b>Materials</b>	
Body:	brass
Valve seat:	PA
Diaphragm:	EPDM
Piston ( $P_2=30$ bar):	brass
<b>Connections</b>	
Inlet:	G 3/8" female
Outlet:	G 3/8" male*
<b>Temperature range</b>	-20°C to +60°C
<b>Leak rate</b>	$\leq 10^{-4}$ mbar l/s He
<b>Weight</b>	ca. 1,6 kg

\* G 1/2" male upon request

Ordering information: Pilot pressure regulator ST2000

**ST2000 - 40 - 1,5 - VV**

Outlet pressure $P_2$	Art.-no.
1,5 max. 1,5 bar*	717.05640
4 max. 4 bar*	717.05641
10 max. 10 bar	717.05642
20 max. 20 bar	717.05643
30 max. 30 bar	717.05644

### Venting valve

<b>VV</b>	with venting valve**
<b>0</b>	without venting valve

\* Only with separate gas

\*\* For pressure control with separate gas a venting valve is necessary to relief the control pressure.