

# Panel / Line regulator M53-6

spectron lab



Line pressure regulator LM53-6



Example: PM53 panel mounted

## Product features

- 2-stage diaphragm line pressure regulator or for panel and panel surface mounting with anti-vibration device
- For non-corrosive gases and gas mixtures up to quality 6.0
- 6 ports for flexible and individual configuration
- Very high control accuracy
- Metal-to-metal seal to atmosphere
- Central filter
- Approved for use with oxygen
- New laboratory-style design
- Suitable for ECD-applications
- Pressure regulator can be evacuated

## Technical data

<b>Inlet pressure <math>P_1</math></b>	max. 300 bar
<b>Max. outlet pressure <math>P_2</math></b>	1,5 / 4 / 10 / 20 bar

### **Materials**

Body:	chrome plated brass
Diaphragm:	Hastelloy C276
Valve seat:	PA
Soft goods:	FPM
Filter:	Sinterbronze

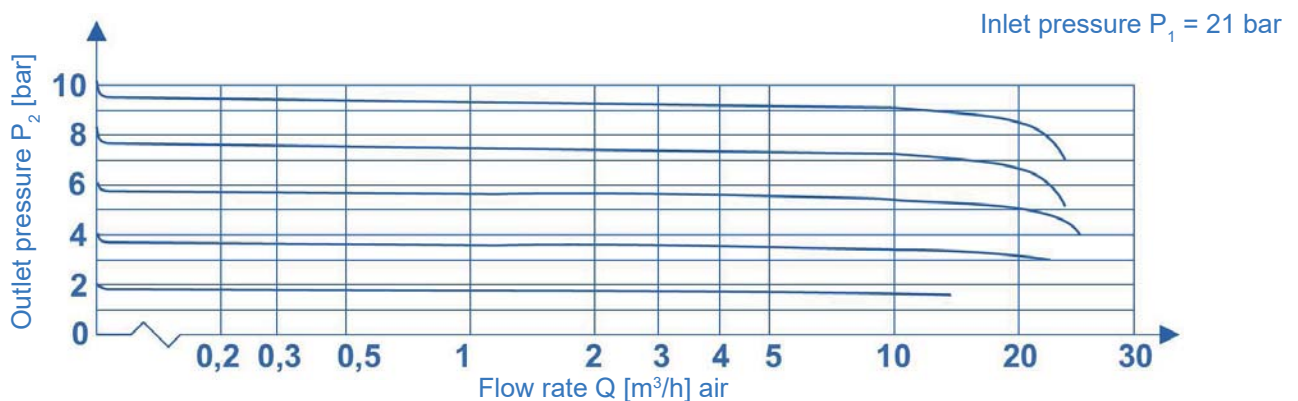
<b>In- / outlets</b>	1/4"-NPT female
----------------------	-----------------

<b>Temperature range</b>	-20°C to +60°C
--------------------------	----------------

<b>Leakrate (to atmosphere):</b>	$\leq 10^{-8}$ mbar l/s He
(via seat):	$\leq 10^{-6}$ mbar l/s He

<b>Weight</b>	1,6 kg
---------------	--------

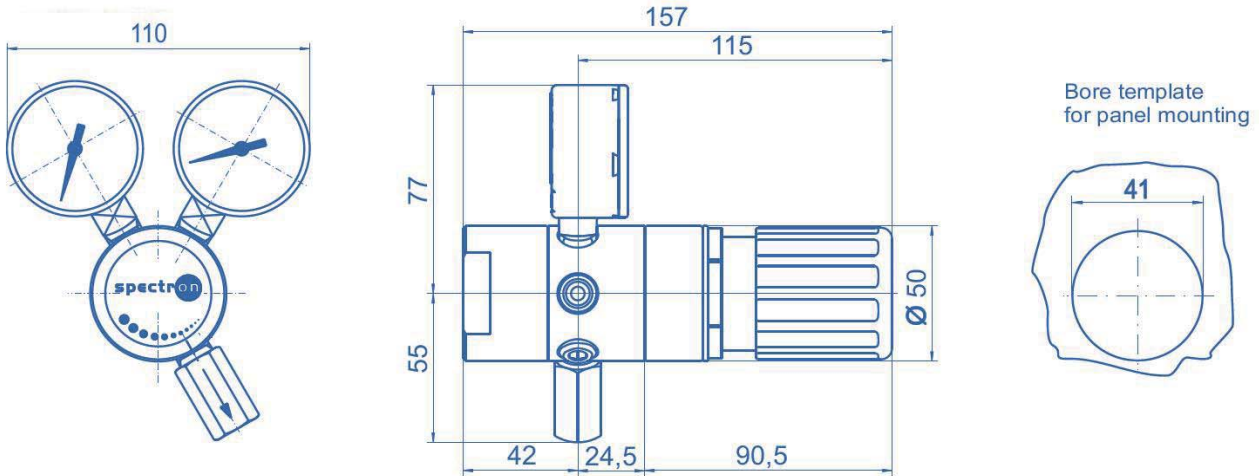
## Flow curves M53



# Panel / Line regulator M53-6

spectron lab

## Dimensions M53-6

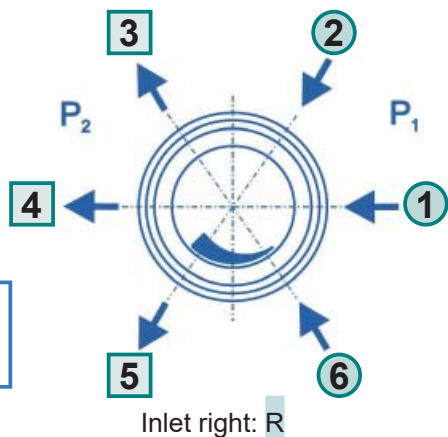
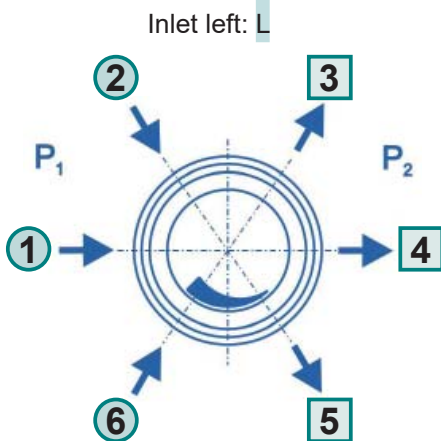


## Ordering information:

Pressure regulators M53-6

### In- / outlets

- CM 1/4** 1/8" / 1/4" / 1/2"-compression fitting (brass)
- CM 6** 3 / 6 / 8 / 10 / 12 mm - compression fitting (brass)
- CE 1/4** 1/8" / 1/4" / 1/2"-compression fitting (stainless steel)
- CE 6** 3 / 6 / 8 / 10 / 12 mm - compression fitting (stainless steel)
- B** plug
- A** relief valve - 1/4"-NPT-F
- K** contact pressure gauge
- M** pressure gauge
- 0** 1/4"-NPT-F (port only)



**LM53 - L - 300 - 20 - 1 - 2 - 3 - 4 - 5 - 6 - H2**

### Type

- L** Line regulator
- P** Panel regulator

### Inlet

- L** left
- R** right

### Inlet pressure P<sub>1</sub>

- 100** max. 100 bar
- 200** max. 200 bar
- 300** max. 300 bar

### Outlet pressure P<sub>2</sub>

- 1,5** max. 1,5 bar
- 4** max. 4 bar
- 10** max. 10 bar
- 20** max. 20 bar

### Gas type

Please specify gas type!

For inlet pressure up to 50 bar and outlet pressure of max. 1,5 or 4 bar please use M51.